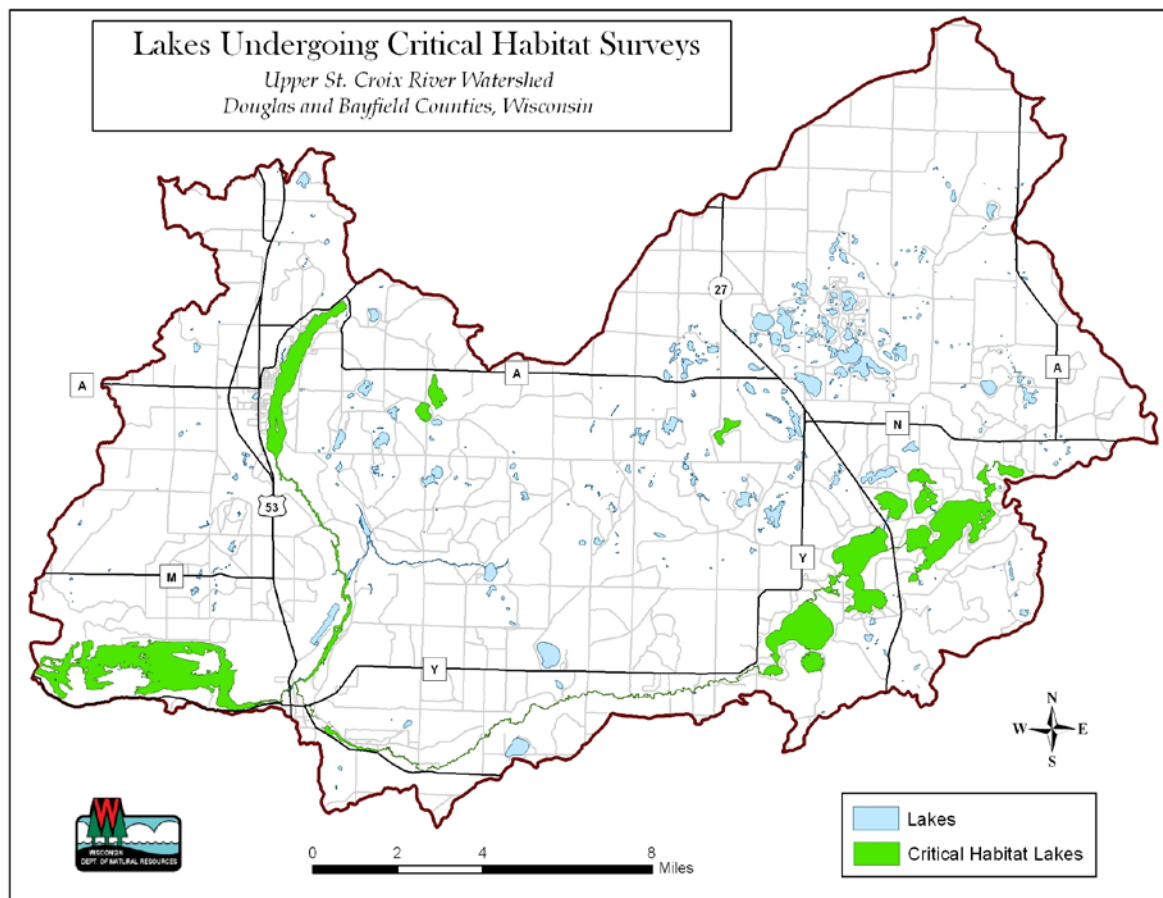


LAKES/RIVERS THAT WILL HAVE COMPLETED CRITICAL HABITAT REPORTS IN 2009/2010

Lake/River	County	Acreage
BIRCH	BAYFIELD	129
BONY	BAYFIELD	191
CRANBERRY	BAYFIELD	131
DEVILS	BAYFIELD	23
MIDDLE EAU CLAIRE	BAYFIELD	926
ROBINSON	BAYFIELD	91
SHUNENBERG	BAYFIELD	44
SWETT	BAYFIELD	88
UPPER EAU CLAIRE	BAYFIELD	1030
BEAUREGARD	DOUGLAS	93
ST. CROIX HEADWATERS/RIVER	DOUGLAS	113
LOWER EAU CLAIRE	DOUGLAS	802
ST CROIX FLOWAGE	DOUGLAS	1913
UPPER ST CROIX	DOUGLAS	855



NEXT STEPS: Critical habitat reports currently being completed, and public meetings anticipated in late November or Early December.